

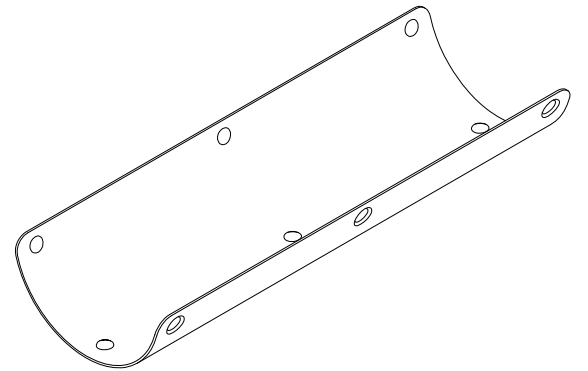
NOTES:

1. MATERIAL: TYPE 321 S.S. SHEET, ANNEALED (0.036 THK.) x 4.387 x 8.383 LG.
2. HEAT TREAT: NONE
3. SURFACE TREATMENT: NONE

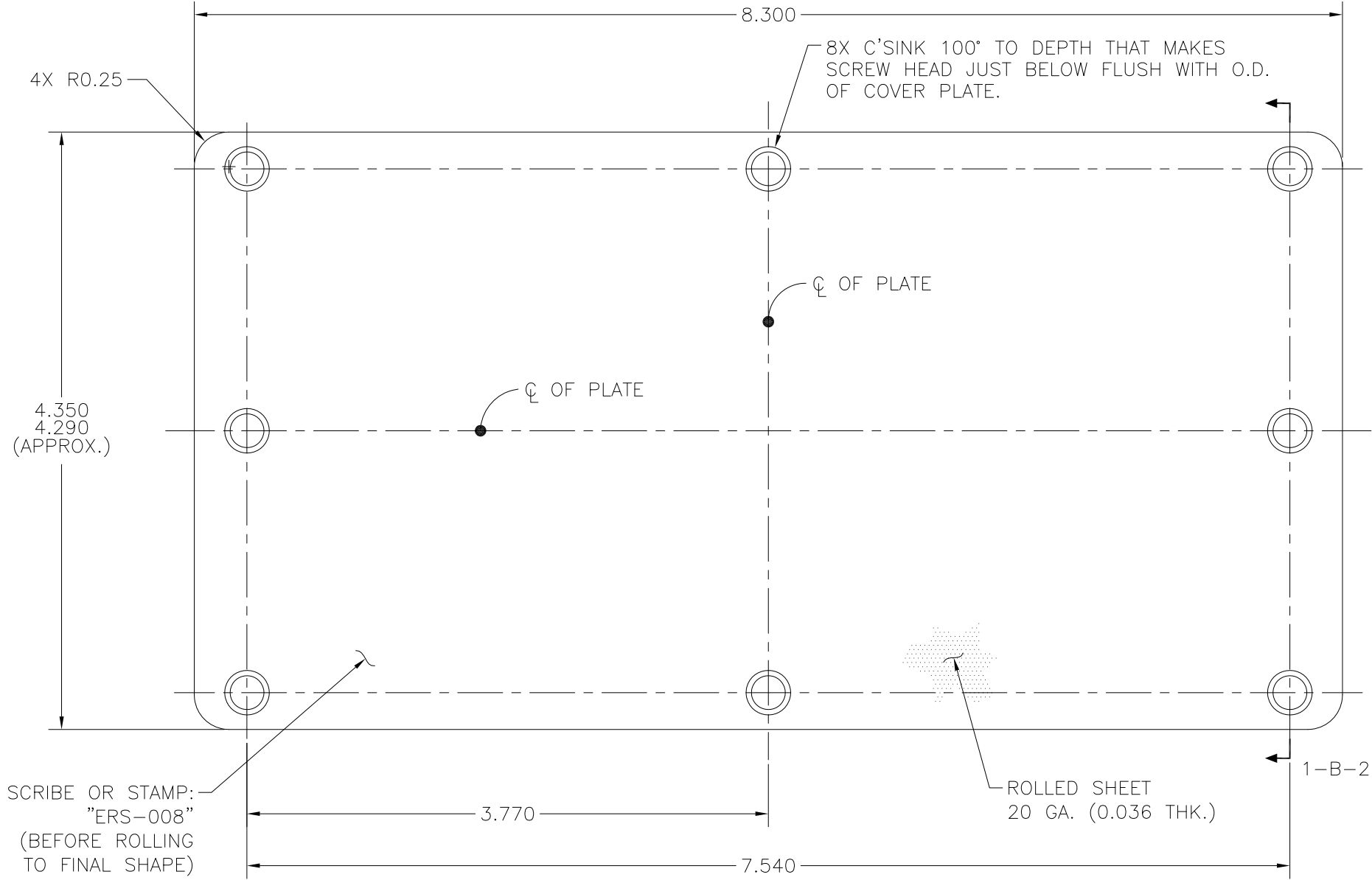
4 WHILE THE DIMENSIONS SHOWN REFLECT PART REQ'D., IT WILL BE NECESSARY TO FIT THIS PART TO DWG. ERS-007, MOTOR HOUSING SUB. HAND WORK MOTOR HOUSING SUB & COVER PLATE ATTACHED WITH #8-32UNC-2A, 100° FLAT HEAD SCREWS UNTIL SUB, COVER PLATE & SCREWS PASS EASILY THRU A RING GAUGE 2.945/2.940 DIA.

5. WEIGHT: 0.36 LBS.

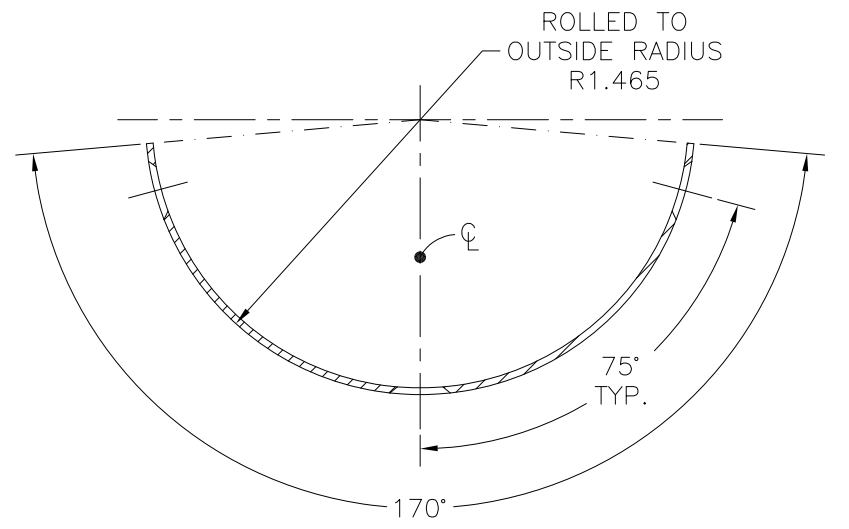
REVISIONS				
NO	DESCRIPTION	DATE	BY	APR/DATE
0	ISSUED FOR MANUFACTURE	05/12/10		



PICTORIAL 1-D-2  
COVER PLATE  
(AFTER ROLLING)  
N.T.S.



VIEW 1-C-5  
COVER PLATE  
(APPROX. DIMENSIONS BEFORE ROLLING PLATE)



SECTION 1-B-2  
REF. 1-B-4

5

TOLERANCES: UNLESS OTHERWISE SPECIFIED 0.X ± 0.030 0.XX ± 0.010 0.XXX ± 0.005		PROPRIETARY NOTICE THIS DRAWING AND THE INFORMATION IT CONTAINS ARE CONSIDERED CONFIDENTIAL, AND MAY NOT BE REPRODUCED, COPIED OR USED, IN PART OR IN WHOLE, WITHOUT PRIOR WRITTEN CONSENT.		<b>Integrated Ocean Drilling Program</b> TEXAS A&M UNIVERSITY 1000 DISCOVERY DRIVE COLLEGE STATION, TX 77845	
ANGLES ± 1/2° BREAK EDGES 0.015 x 45° MIN. FINISH 125 ✓ [0.010]A		SHEET 1 OF 1 SCALE 1:2		TITLE COVER PLATE SYSTEM ASSEMBLY 3" ERS	
ALL DIMS ARE IN INCHES, UNLESS NOTED OTHERWISE.		BY KM	DATE 03/31/10	APPROVED TP	CHECKED JCS
		SIZE D	P/N ERS-008	REV. 0	